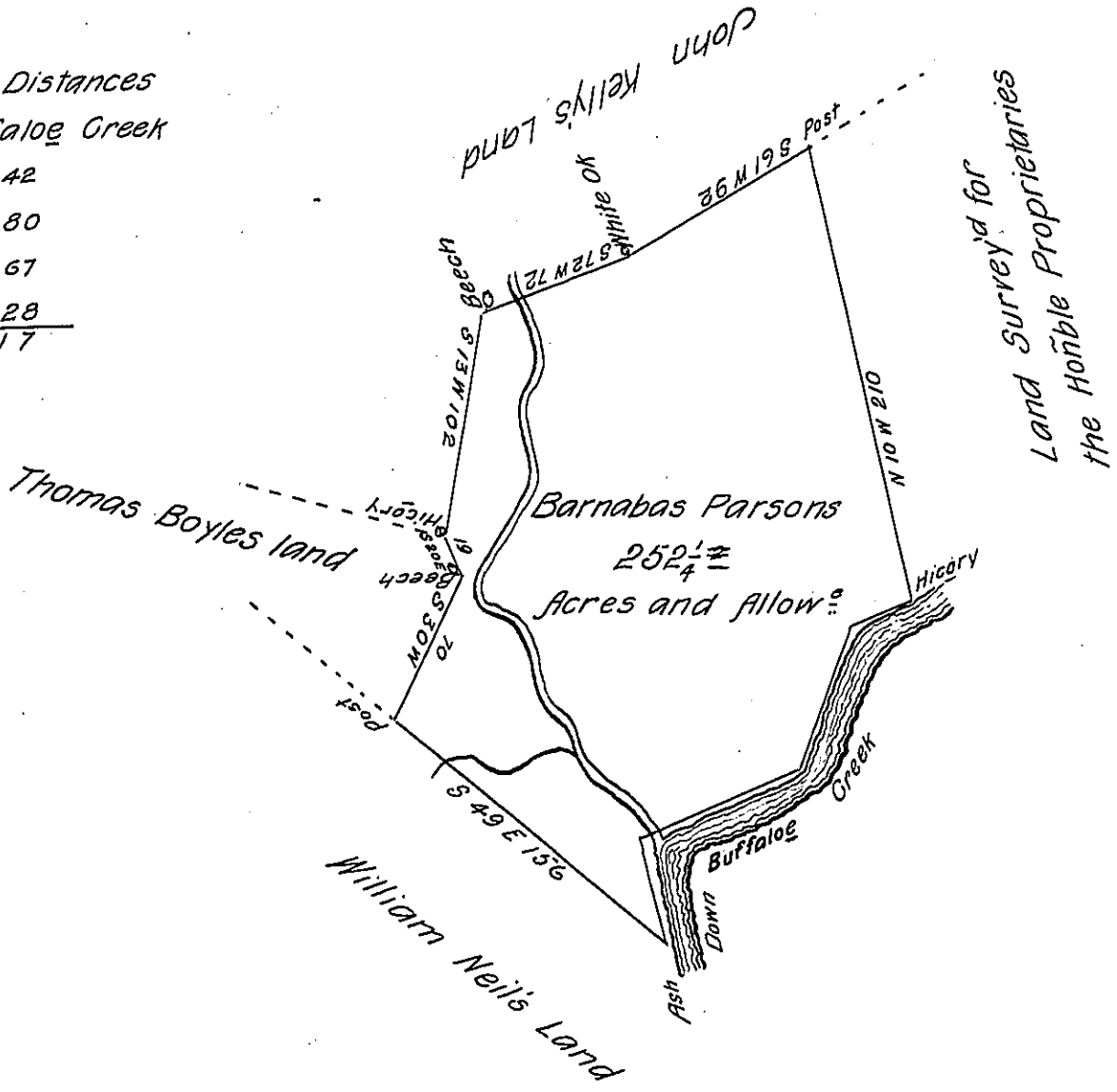


Courses & Distances  
Down Buffalo Creek

N 10 W	42
N 70 E	80
N 22 E	67
N 71 E	28
	<u>217</u>



The Draught of a tract of land called \_\_\_\_\_ situate in Buffalo Township Northumberland County Containing Two hundred fifty two acres 40 Perches with the usual allowance of Six acres P. Gent for Roads Survey'd the 3<sup>d</sup> day of October Anno Domini 1770. In Pursuance of an Order of Survey to Barnabas Parsons Bearing date at Philadelphia the 28<sup>th</sup> day of August Anno Dom. 1769 No 3786.

P- Wm Maclay

To John Lukens Esq<sup>r</sup>  
S.G. of Pennsylvania.

IN TESTIMONY that the above is a copy of the original remaining on file in the Department of Internal Affairs of Pennsylvania, made conformably to an Act of Assembly approved the 16th day of February, 1833, I have hereunto set my Hand and caused the Seal of said Department to be affixed at Harrisburg, this twentieth day of May 1905.

*Loac B. Brown*  
Secretary of Internal Affairs.